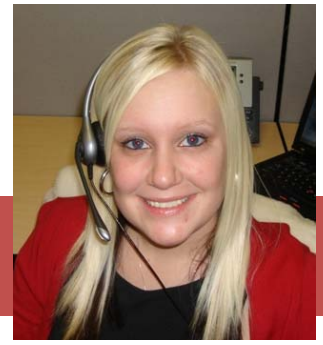




Since 1987

AT&T products and services.....



May I help you??

ATM

Overview

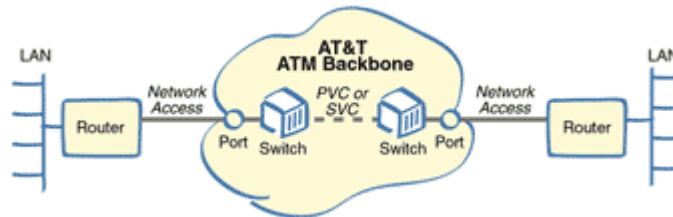
Your business communications demand high-speed transport and high-level security - and a data network that can rapidly change its size, location and capabilities. AT&T's Asynchronous Transfer Mode (ATM) Service transports customer data at the highest speed available at the lowest delay permitted for each type of information. For example, most voice and video traffic demands the lowest delay available, while certain data transmissions withstand higher delay.

AT&T has the depth and breadth to address your ATM needs at the local, national, or global level. AT&T extends different levels of management and control on a site-by-site basis. So if you find that you need a network connection in the most remote area of North America, throughout metropolitan Europe, or management support for your entire network, AT&T's ATM service has all the options to solve your networking needs.

AT&T ATM Service ensures high reliability and throughput with a unique feature called ReliaBURST®, giving you sustained bursting capabilities beyond the Committed Information Rate (CIR) for an extended period of time as well as proactive congestion management. The ReliaBURST feature allocates excess network capacity fairly among all users and provides optimum protection of network resources by metering access to the network via a closed-loop feedback mechanism, avoiding congestion and potential data drop-outs. The result is highly dependable data delivery, fairly allocated to all network end users.

Description/Diagram

At the core of the AT&T ATM network is an MPLS backbone that provides high-speed reliability, low congestion, and consistent performance. The backbone uses high-speed ATM cell relay nodes connected by a network of DS3s, OC3s and OC12s trunks. AT&T Local ATM Service will connect you to your other locations in the same LATA. Your domestic and/or international ATM Service can interconnect to your local ATM locations for a complete solution.



[\(Enlarge Network Diagram\)](#)

Features

- Network performance, configuration, installation and monitoring all handled by AT&T, along with easy web tools for electronic ordering, maintenance, billing and network usage analysis
- Any-to-any end-point connectivity between LANs and WANs
- Wholly owned coast-to-coast backbone
- SONET rings coupled with technology capable of restoring fiber route cuts within milliseconds
- Selection of three Quality of Service (QoS) classes that determine the priority of the data traversing your network
- Optional UNI port bi-directional exchange of information across the access link between the CPE and AT&T switch
- Multiple rerouting capabilities in the event of a major failure
- Flexible range of speeds and dedicated access options that allow you to select the right option for each location
- Industry-leading Service Level Agreements (SLA's)
- Varying levels of management that support every customer site location

Benefits

- Flexibility and scalability to connect many locations with ease, offering you global reach no matter where or how you are doing business
- 24x7 monitoring and maintenance will ensure your network is operational to meet your business demands
- Simplified migrations and network reconfigurations allow your network to keep pace with your changing business needs
- The most extensive array of cutting-edge technology options in the industry, enabling you to customize the service to meet your demanding requirements
- AT&T's global packet network components are fully redundant and restoration is done in milliseconds - you won't even notice if the network has re-routed your traffic

Related Service

- [Frame Relay](#)
Frame Relay service is a data transport service that uses packet-switching technology to route data over a public network. Frame Relay service provides the speed and reliability of data private-line services without the cost of a private network. Your data file is divided into individual frames (packets), addressed, and sent the across AT&T's High Speed Packet Network. AT&T provides an end-to-end data network featuring fast, efficient many-to-many connectivity enabling your critical applications.

Call 630-692-2702 or email: sales@dccil.com

