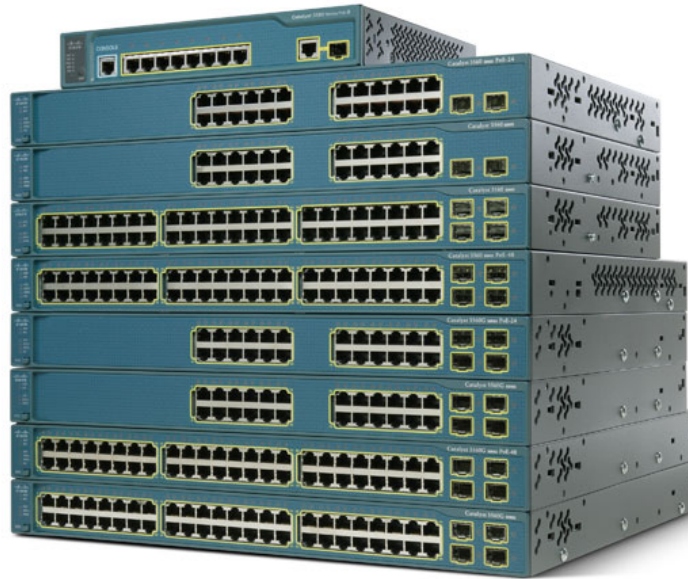


Cisco Catalyst 3560 Series Switches



Cisco Catalyst 3560 Series Switches



Cisco Catalyst 3560 Series Switches

Models Comparison

The following table compares the Cisco Catalyst 3560 Series Switches Models.

Model	Port Density and Type	Forwarding Rate	PoE Class 2 / PoE Class 3 Devices Supported	Maximum Power Consumption / Dissipation
3560-8PC	8 Ethernet 10/100 ports with PoE and 1 dual-purpose 10/100/1000 uplink	2.7 Mpps	8	204 W, 273 Btus per hr
3560-12PC	12 Ethernet 10/100 ports with PoE and 1 dual-purpose 10/100/1000 uplink	3.5 Mpps	12/8	204 W, 273 Btus per hr
3560-24TS	24 Ethernet 10/100 ports and 2 SFP ports	6.5 Mpps	–	45 W, 393 Btus per hr
3560-48TS	48 Ethernet 10/100 ports and 4 SFP ports	13.1 Mpps	–	65 W, 546 Btus per hr
3560-24PS	24 Ethernet 10/100 ports with PoE and 2 SFP ports	6.5 Mpps	24/24	485 W, 393 Btus per hr
3560-48PS	48 Ethernet 10/100 ports with PoE and 4 SFP ports	13.1 Mpps	48/24	530 W, 546 Btus per hr
3560G-24TS	24 Ethernet 10/100/1000 ports and 4 SFP ports	38.7 Mpps	–	100 W, 534 Btus per hr
3560G-48TS	48 Ethernet 10/100/1000 ports and 4 SFP ports	38.7 Mpps	–	160 W, 690 Btus per hr
3560G-24PS	24 Ethernet 10/100/1000 ports with PoE and 4 SFP ports	38.7 Mpps	24/24	540 W, 534 Btus per hr
3560G-48PS	48 Ethernet 10/100/1000 ports with PoE and 4 SFP ports	38.7 Mpps	48/24	590 W, 690 Btus per hr

The Cisco Catalyst 3560 Series is a line of fixed-configuration, enterprise-class switches that include IEEE 802.3af and Cisco pre-standard Power over Ethernet (PoE) functionality in Fast Ethernet and Gigabit Ethernet configurations. These are ideal access layer switches for small enterprise LAN access or branch-office environments. Combining both 10/100/1000 and PoE configurations for maximum productivity and investment protection, they help you deploy new applications such as IP telephony, wireless access, video surveillance, building management systems, and remote video kiosks.

You can maintain the simplicity of traditional LAN switching and still deploy networkwide intelligent services such as:

- Advanced quality of service (QoS)
- Rate limiting
- Access control lists (ACLs)
- Multicast management
- High-performance IP routing
- Cisco EnergyWise to measure, report and reduce energy usage across the entire organization

Simplify Network Management

Available for the Catalyst 3560 Series, the [Cisco Network Assistant](#) is a centralized management application for switches, routers, and wireless access points. Free of charge, the application provides configuration wizards that greatly simplify the implementation of converged networks and intelligent network services.

Configurations:

- Cisco Catalyst 3560-8PC
8 Ethernet 10/100 ports with PoE and 1 dual purpose 10/100/1000 and small form-factor pluggable (SFP) port; compact form-factor with no fan
- Cisco Catalyst 3560-12PC
12 Ethernet 10/100 ports with PoE and 1 dual purpose 10/100/1000 and small form-factor pluggable (SFP) port; compact form-factor with no fan
- Cisco Catalyst 3560-24TS
24 Ethernet 10/100 ports and 2 SFP ports
- Cisco Catalyst 3560-48TS
48 Ethernet 10/100 ports and 4 SFP ports
- Cisco Catalyst 3560-24PS
24 Ethernet 10/100 ports with PoE and 2 SFP ports
- Cisco Catalyst 3560-48PS
48 Ethernet 10/100 ports with PoE and 4 SFP ports
- Cisco Catalyst 3560G-24TS
24 Ethernet 10/100/1000 ports and 4 SFP ports

- Cisco Catalyst 3560G-48TS
48 Ethernet 10/100/1000 ports and 4 SFP ports
- Cisco Catalyst 3560G-24PS
24 Ethernet 10/100/1000 ports with PoE and 4 SFP ports
- Cisco Catalyst 3560G-48PS
48 Ethernet 10/100/1000 ports with PoE and 4 SFP ports

The Cisco Catalyst 3560 is available with either the IP Base or IP Services software images and can be upgraded to the Advanced IP Services software image. The IP Base software (formerly called the Standard Multilayer Image or SMI) includes advanced QoS, rate-limiting, ACLs, and basic routing and IPv6 functionality. The IP Services software (formerly called the Enhanced Multilayer Image or EMI) provides a richer set of enterprise-class features, including advanced hardware-based IP unicast and IP Multicast routing as well as policy-based routing (PBR). The Advanced IP Services software includes IPv6 routing and IPv6 ACL support.

Call 630-692-2702 or email: sales@dccil.com

